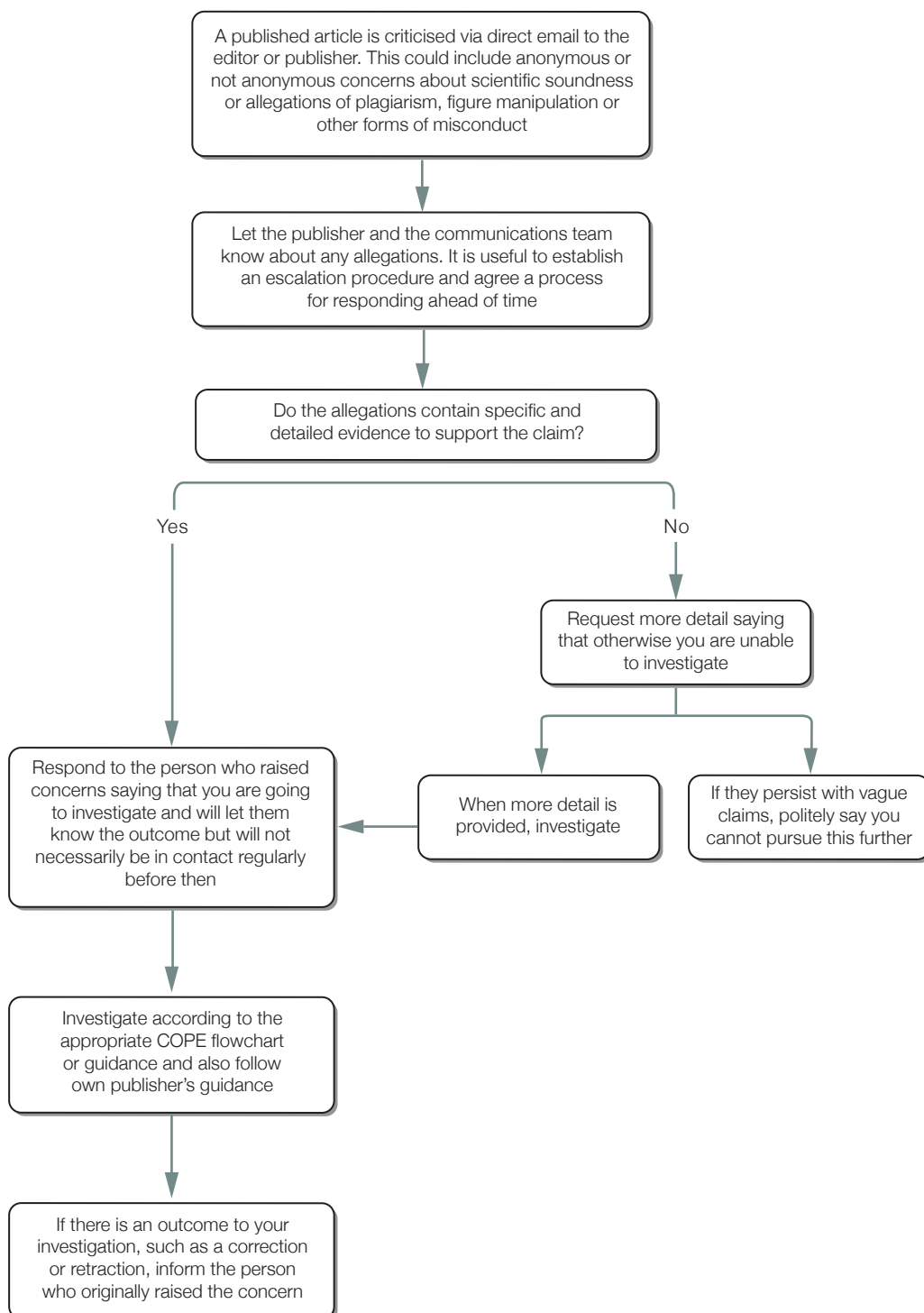


How to respond to whistle blowers when concerns are raised directly



Note
The tone of the allegations may be aggressive or personal. Respond politely; don't get drawn into personal exchanges

Note
Sometimes the whistle blower may prefer to remain anonymous. It is important not to try to "out" people who wish to be anonymous

Developed in collaboration with BioMed Central

© 2015 Committee on Publication Ethics and BioMed Central

Version one
Published November 2015

A non-exclusive licence to reproduce these flowcharts may be applied for by writing to: cope_administrator@publicationethics.org