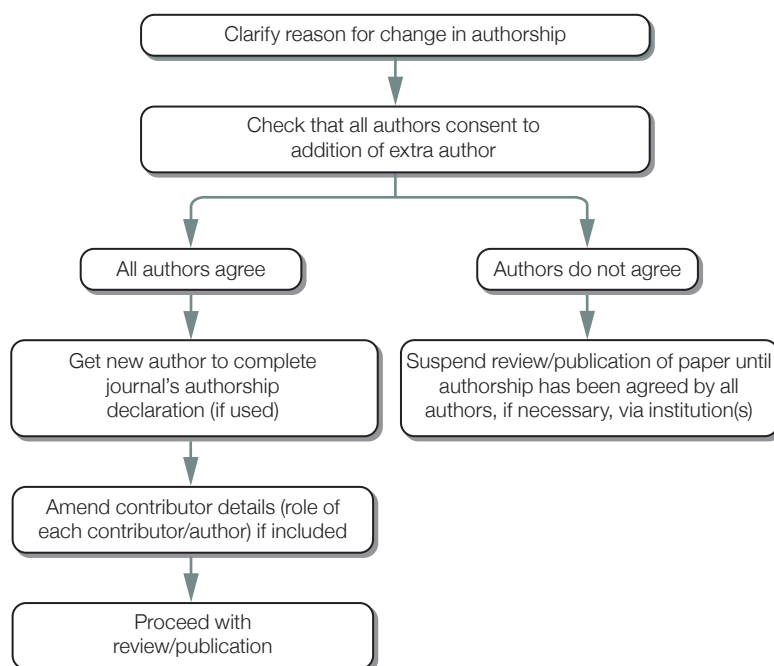


## Changes in authorship

### (a) Corresponding author requests addition of extra author before publication

**Note**

Major changes in response to reviewer comments, e.g. adding new data might justify the inclusion of a new author

Developed for COPE by Liz Wager of Sideview ([www.lizwager.com](http://www.lizwager.com)) © 2013 Committee on Publication Ethics First published 2006

A non-exclusive licence to reproduce these flowcharts may be applied for by writing to: [cope\\_administrator@publicationethics.org](mailto:cope_administrator@publicationethics.org)